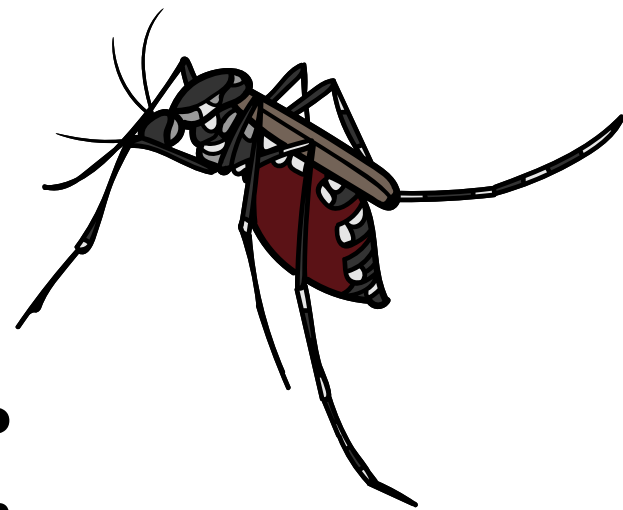


WE WANT TO HEAR FROM YOU!



Join us for a **FOCUS GROUP** discussion on mosquitoes in **your neighborhood**

Results will be used by your local health
agencies to develop educational
messages for your community

Participation Involves:

1.5 to 2 hours of your time

**Attending the focus group discussion with
5 to 9 other individuals**

**Complete a brief registration form
to sign up!**

LIMITED SPACES AVAILABLE!

Register at bit.ly/MosquitoFG-Belvidere or
using the QR code below



WHO

**Local residents
18 and older**

WHEN

**Thursday June 22
12:00pm**

WHERE

**Warren Co.
Cooperative Extension
165 County Rte. 519 S
Belvidere, NJ 07823**

TIME

COMMITMENT

**1 hour 30 minutes to
2 hours**

**Focus Group
Participants will
receive a \$40 e-gift
card for their time**

This focus group discussion is led by Cornell University Department of Entomology and
has been approved by their Institutional Review Board