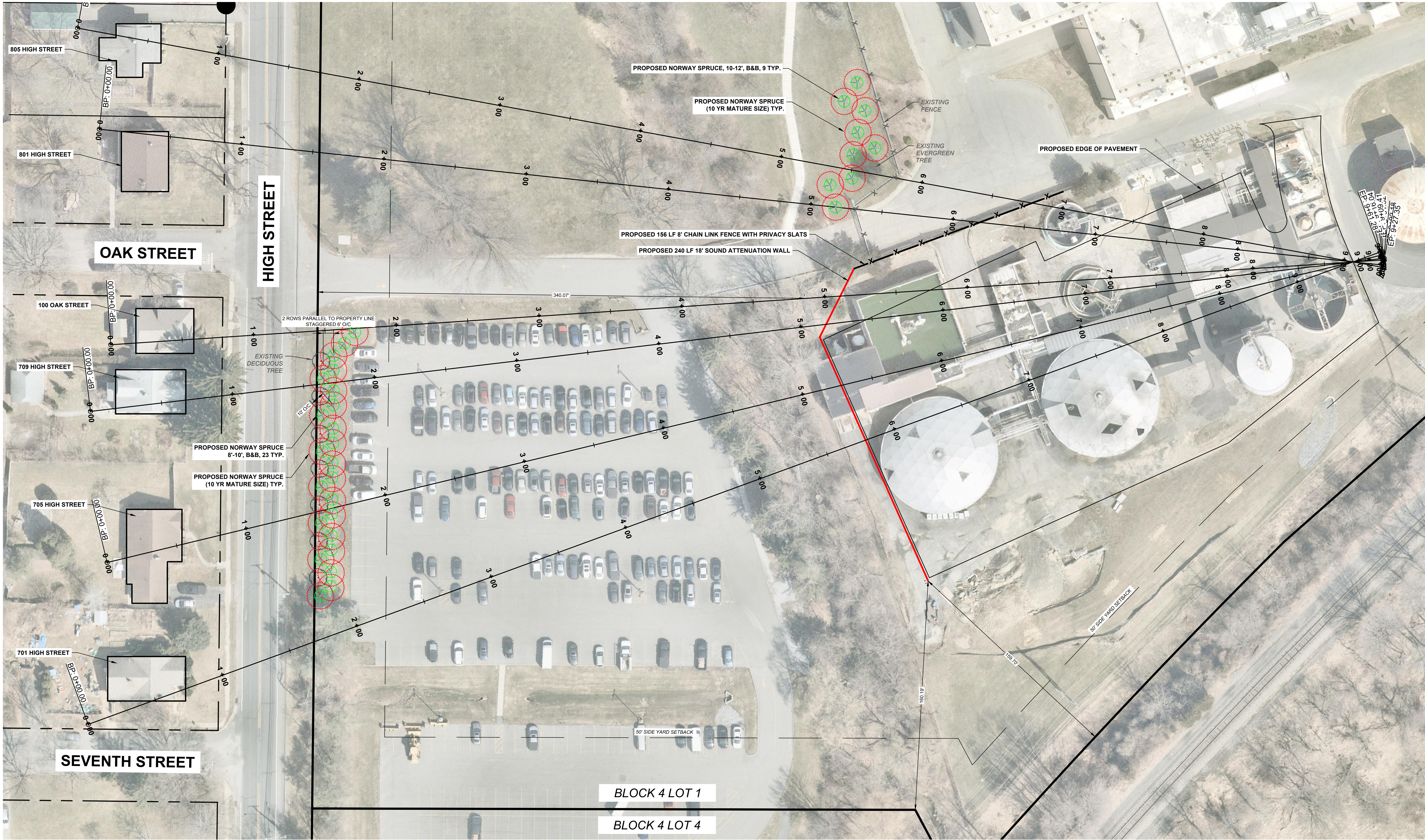


E:\SCE\Hackettstown\8719.074 Hackettstown\8719.074 Final Site Plan Trailer Storage Lot\Exhibits\8719.074 Sightline.dwg Fri, May 15, 2020 - 1:24pm Sung SUBURBAN CONSULTING ENGINEERS, INC.



REFERENCE:
PRELIMINARY AND FINAL MAJOR SITE PLANS - "MARS INCORPORATED PROPOSED TRAILER PARKING LOT" PREPARED BY SUBURBAN CONSULTING ENGINEERS, INC., DATED MARCH 28, 2019, LAST REVISED NOVEMBER 12, 2019

NOTICE
THIS DRAWING AND ALL INFORMATION CONTAINED HEREIN IS AUTHORIZED FOR USE ONLY BY THE PARTY FOR WHOM THE WORK WAS CONTRACTED OR TO WHOM IT IS CERTIFIED. THIS DRAWING MAY NOT BE COPIED, REUSED, DISCLOSED, DISTRIBUTED, OR RELIED UPON FOR ANY OTHER PURPOSE WITHOUT THE WRITTEN CONSENT OF SUBURBAN CONSULTING ENGINEERS, INC.
PER N.J.A.C. ELECTRONIC SUBMISSIONS NOT CONTAINING A VALID DIGITAL SEAL OR PAPER COPIES NOT CONTAINING A RAISED SEAL ARE NOT ORIGINALS AND MAY HAVE BEEN ALTERED.
© COPYRIGHT 2018 SUBURBAN CONSULTING ENGINEERS, INC.™
CERTIFICATE OF AUTHORIZATION NO. 24G028037500
ALL RIGHTS RESERVED

REV.	PER COMMENTS	NO.	DATE:	BY:	CHK:
A		05/15/2020			
REVISIONS					

DRAWN BY:	SOS
CHECKED BY:	EBA
CHECKED BY:	

DAREN J. PHIL, PE
NJ PROFESSIONAL ENGINEER
LICENSE NO. 24GE03619100

DATE: 03/13/2020

SE SUBURBAN CONSULTING ENGINEERS, INC.
CO# NO: 24G028037500
21MI100004200
- Civil Engineers - Municipal Engineers -
- Planners - Landscape Architects -
- Planners - Environmentalists - Land Surveyors -
96 US Highway 206, Suite 101 2430 Highway 34, Bldg. A Suite 1R
Flunders, NJ, 07836 - 973.398.1776 Wall, NJ, 08736 - 732.282.1776
EXCELLENCE ♦ ECONOMY ♦ ENVIRONMENT

PRELIMINARY AND FINAL MAJOR SITE PLAN FOR MARS INCORPORATED PROPOSED TRAILER PARKING LOT BLOCK 4, LOT 1 TOWN OF HACKETTSTOWN COUNTY OF WARREN, STATE OF NEW JERSEY		PROJECT NUMBER: SCE-8719.074
SIGHT LINE PLAN		SCALE: 1"=30'
		SHEET 1 OF 1
		REVISION A